

Defining Client Pull Settings for a Specific Web Server

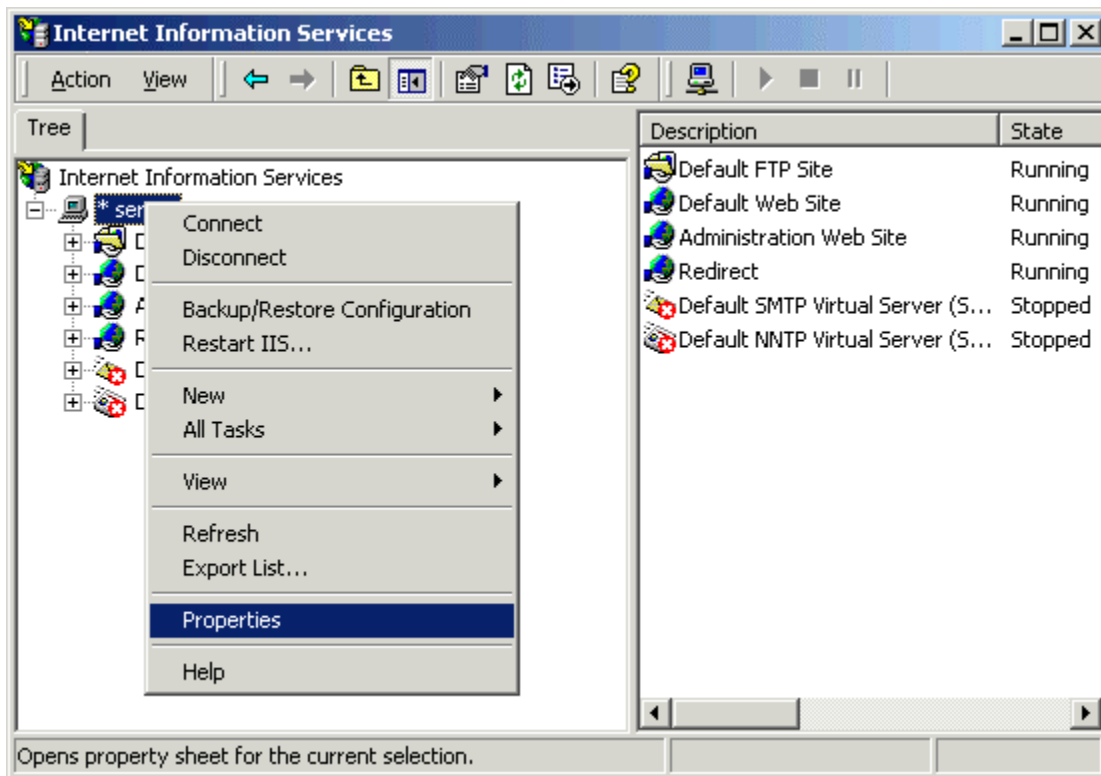
Client pull setting can be used to periodically force an Internet browser to reload a page automatically. Typically, this occurs on a page-by-page basis for a Web site using HTML.

This article describes how to enable default client pull settings through the IIS user interface for a specific Web server.

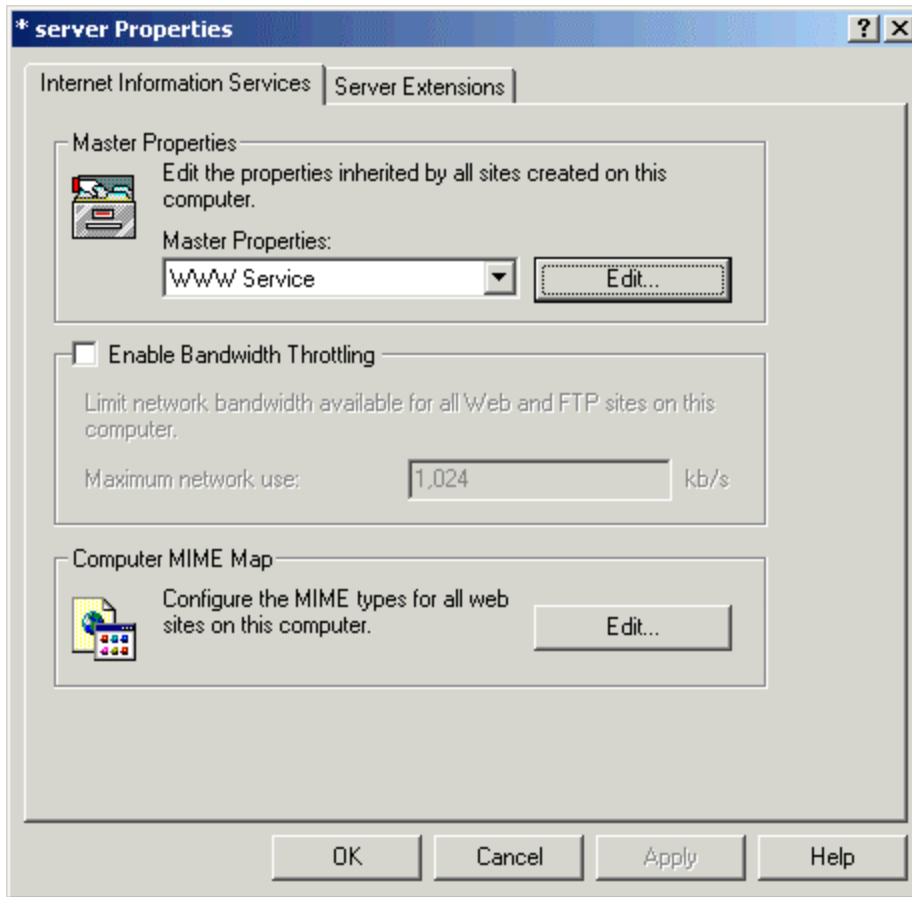
In this article, we will configure a refresh setting of thirty seconds to automatically reload the contents to the client side.

Please follow these steps to accomplish this task.

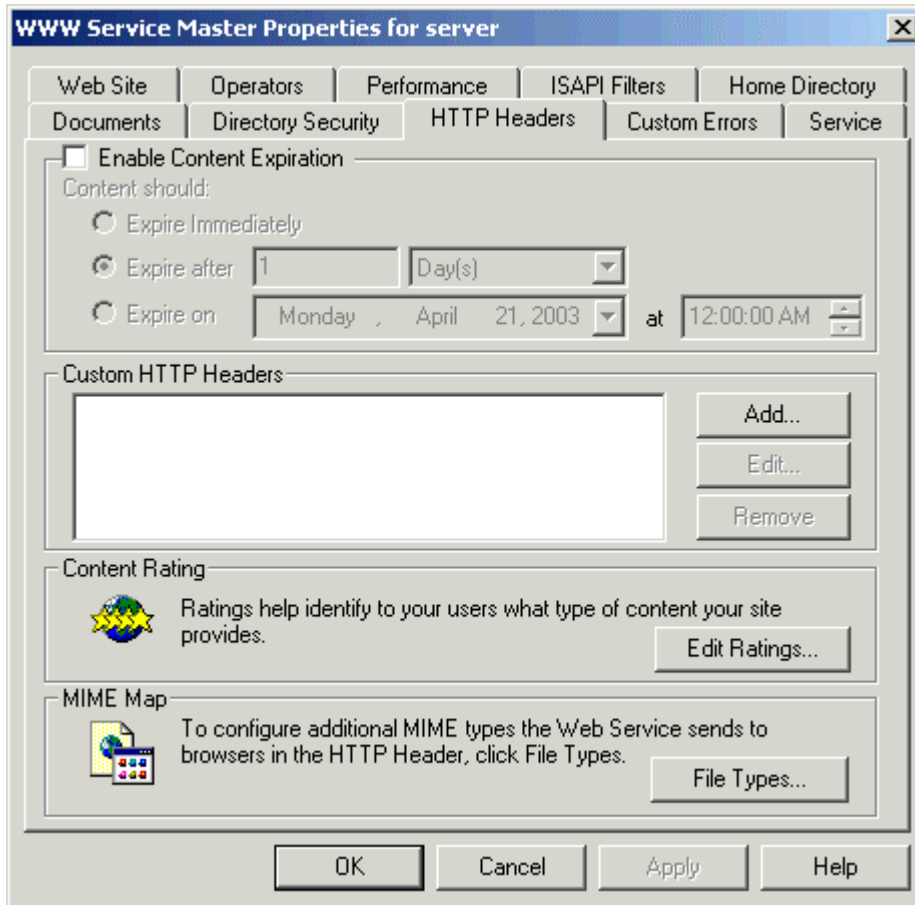
1. In the ISM (Internet Service Manager), right-click the appropriate computer name, and then click **Properties**.



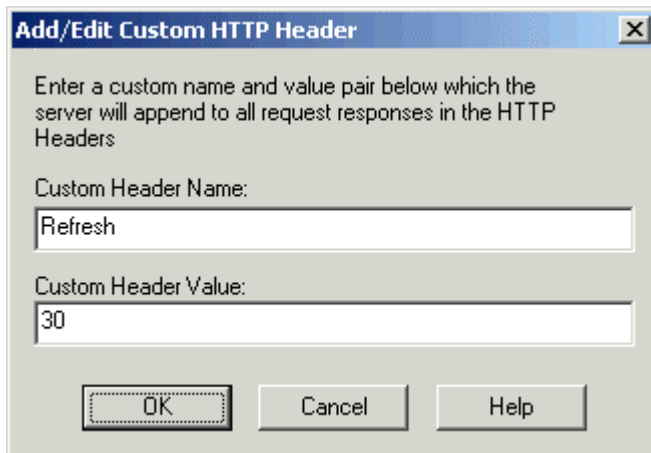
2. Click **Edit** to edit the master WWW properties.



3. Click the **HTTP Headers** tab.



4. Click **Add** in the **Custom HTTP Headers** section.
5. Type **Refresh** in the **Custom Header Name** section.
6. Type the number of seconds in the **Custom Header Value** section.



7. Click **OK** until you return to the MMC.

Note: You can configure this settings for a specific website, web folder or a web page.