

Providing Unrestricted Internet Access Through Internet Security and Acceleration Server

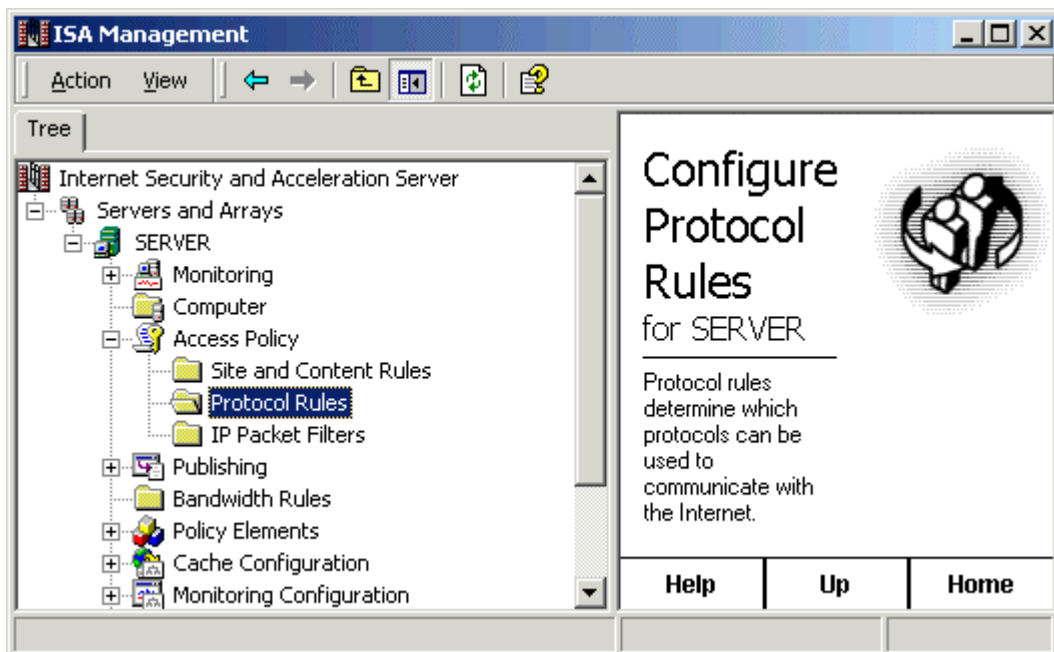
This article will provide you step by step instructions to configure Microsoft Internet Security and Acceleration Server (ISA) that is installed in the integrated mode to allow unrestricted Internet access to Internal network that consists of Microsoft and Non-Microsoft Clients (Unix, Novell etc) computers.

To Allow Internet access

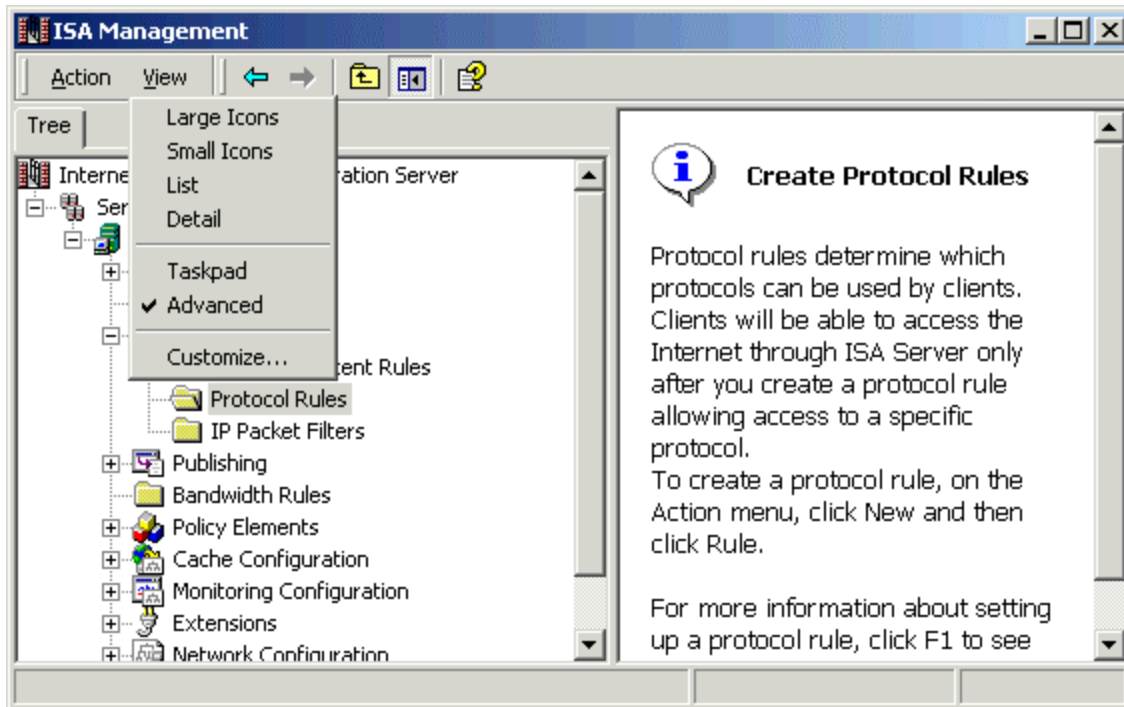
- You should create a **Protocol Rule** for Microsoft clients.
- You should enable **IP Routing** for Secure NAT clients.

Creating Protocol Rule:

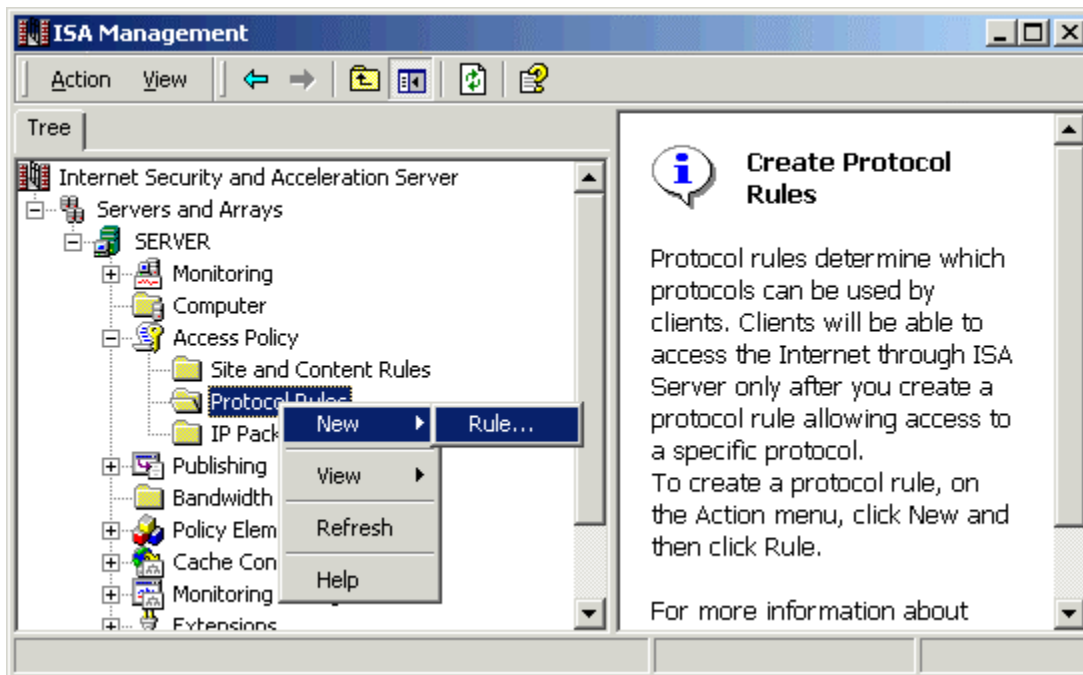
1. Click **Start** → **Programs** → **Microsoft ISA Server** → **ISA Management**.
2. Expand **Access Policy**, and then click **Select Protocol Rules**.



Note: You can switch between advanced view or taskpad view from the View option of toolbar.



3. Right click the **Protocol Rule** → **New** → **Rule**.



4. Type **Unrestricted Internet Access** on the first page of the wizard, and then click **Next**.



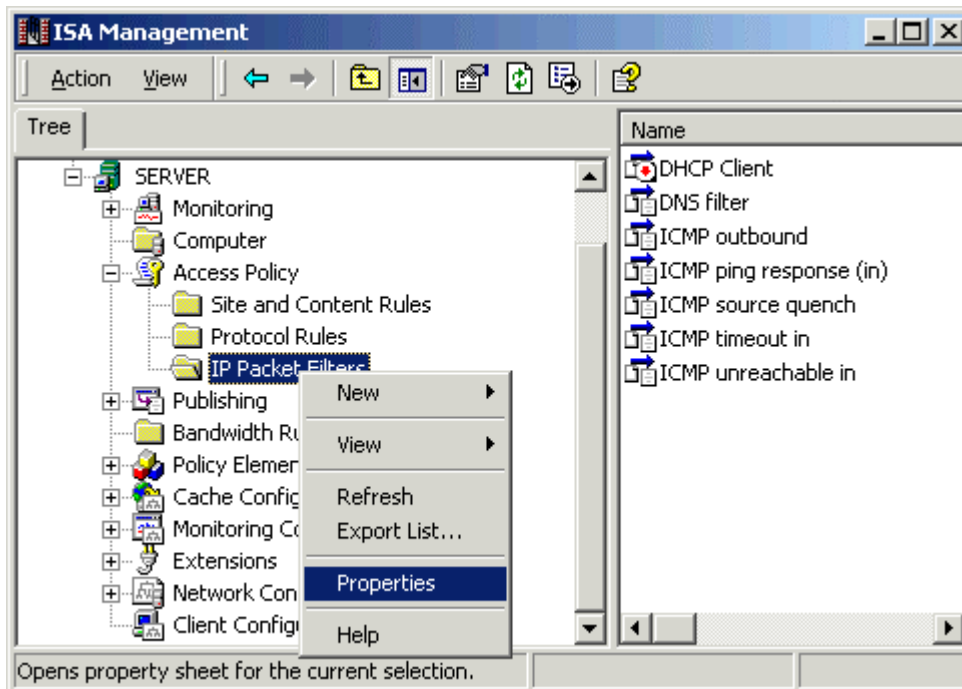
5. Continue to click **Next** more times to accept all of the default settings of the new protocol rule.
6. Review your default selected options in the wizard completion window and Click **Finish**.



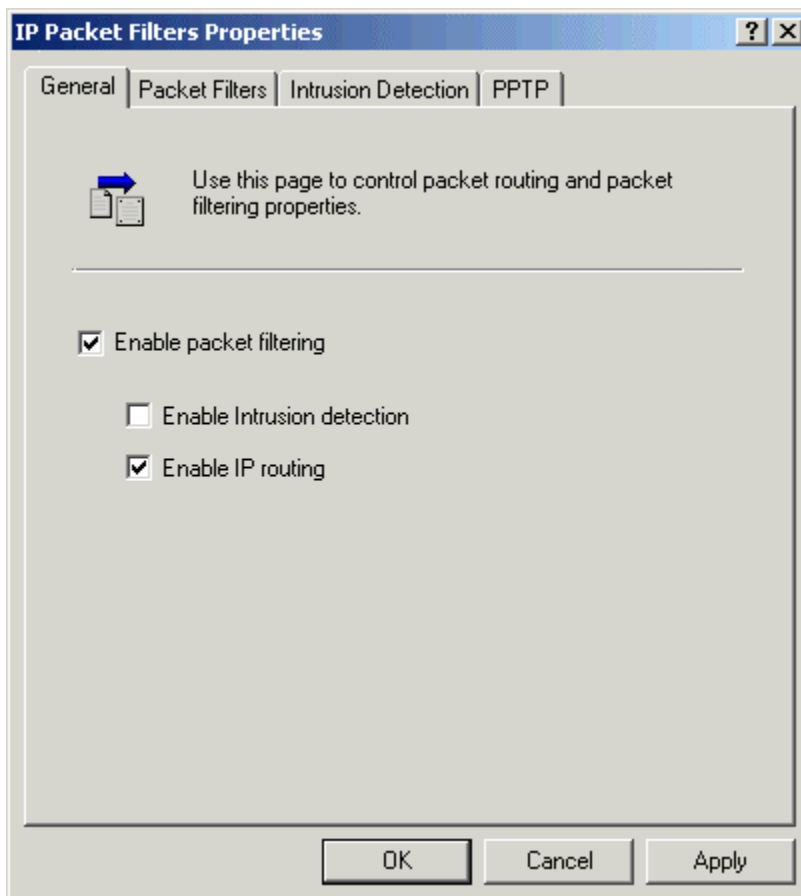
You have successfully created a protocol rule for internal network Microsoft clients to allow unrestricted Internet access.

Enabling IP Routing:

1. In the **Access Policy**, click **IP Packet Filters** (Below the Protocol Rule).
2. Right-click **IP Packet Filters**, and then click **Properties**.



3. Click to select the **Enable IP routing** check box.



4. Click **OK**.
5. On the non-Microsoft client computers, under **TCP/IP Properties**, set the client computer's default gateway to be the internal adapter of the computer that is running ISA Server.

You have successfully created a protocol rule and enabled IP routing for unrestricted Internet Access for your internal network.

Note: If you like this article, then please cast your vote in the forum and give any comments if you have.